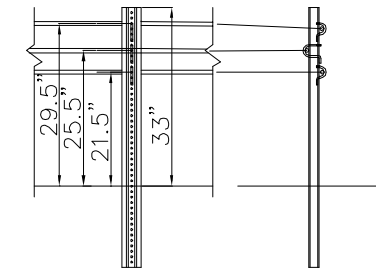
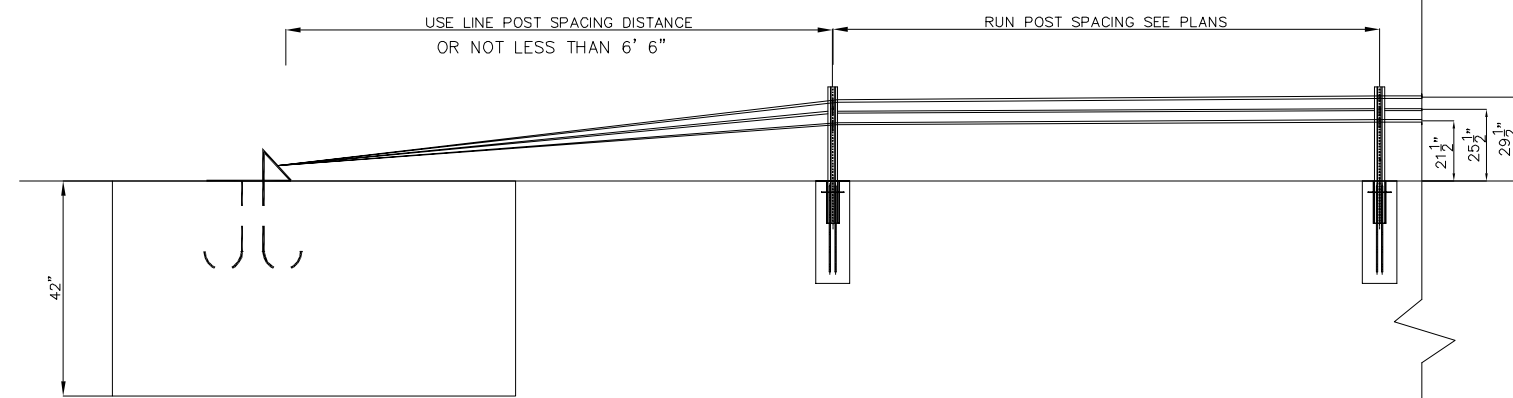


DIRECTION OF TRAFFIC AS TRAILING ANCHOR
DIRECTION OF TRAFFIC AS APPROACH ANCHOR*
*NOTE - THIS ANCHOR MUST BE SHIELDED FROM IMPACT IF USED AS AN APPROACH ANCHOR



LINE POSTS

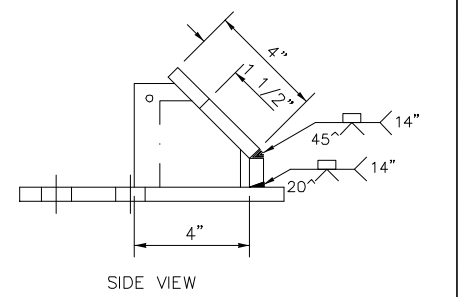
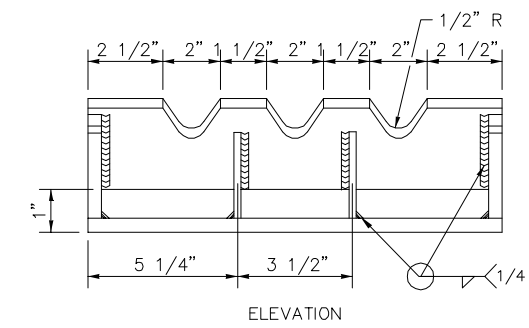
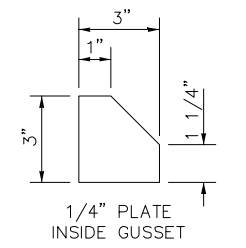
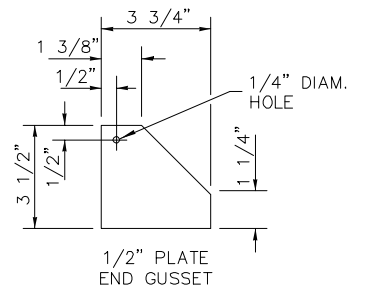
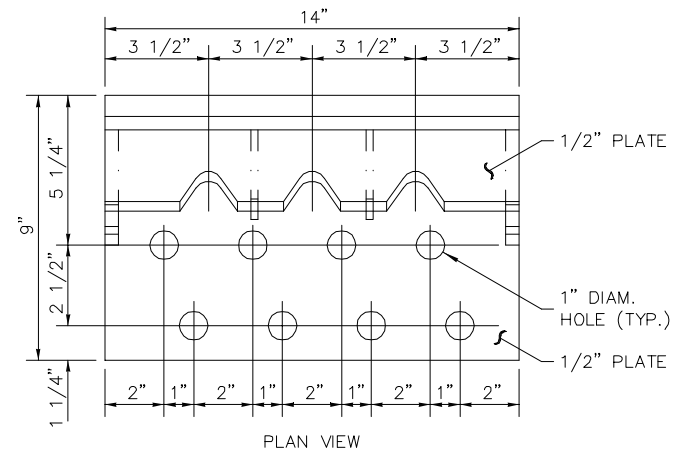
HEIGHT TOLERANCES:
TOP & MIDDLE CABLE: ±1"
BOTTOM CABLE +0", -2"

NOTES:

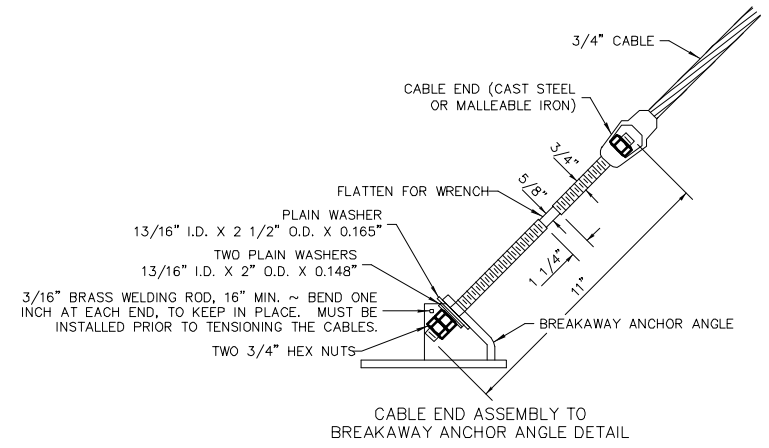
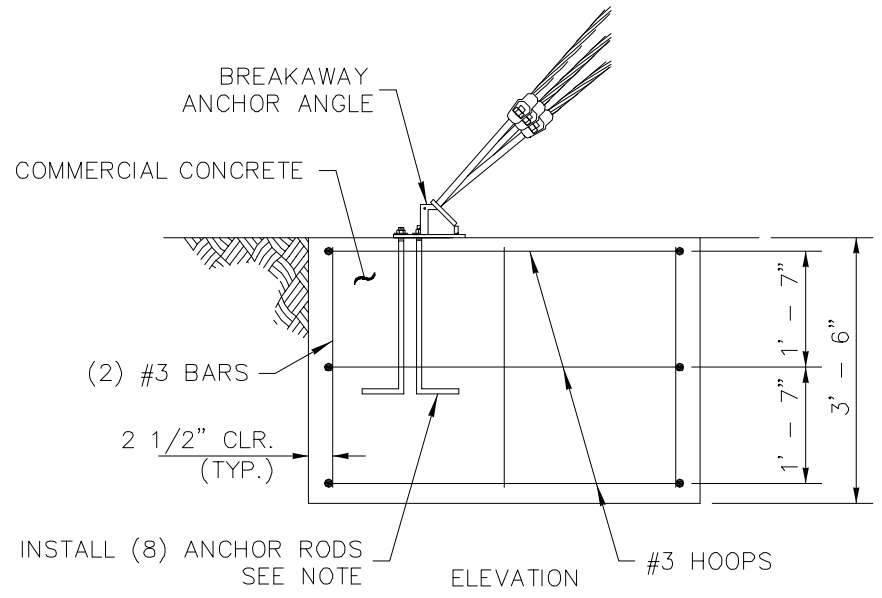
ANCHOR RODS: 8 EA. 3/4" D ASTM A568M CLASS 4.6 RODS OR 8 EA. NO 6 BARS 25" LONG W/ ACI HOOK AND THE TOPS 2" THREADED FOR ONE 3/4" NUT AND WASHER (PER).

BLOCK MAY BE ONE OR TWO PIECE CONFIGURATION.

SLOPING OF BLOCK TOP TO MATCH GROUNDLINE IS RECOMMENDED.



BREAKAWAY ANCHOR ANGLE
ALTERNATE METHODS OF FABRICATING ANCHOR ANGLES
SHALL BE SUBMITTED TO MANUFACTURER FOR APPROVAL



NUCOR NON-350 ANCHOR		
CONTRACTOR:		
SCALE: NONE		DATE: 08/29/06
REVISED:	CHECKED:	DRAWN: CGH
CABLE END TERMINAL INSTALLATION		
NUCOR U.S. HIGH TENSION CABLE BARRIER		1 / 1